

**Ubiquilin3 Antibody (N-term)**  
**Purified Rabbit Polyclonal Antibody (Pab)**  
**Catalog # AP2177a****Specification**

---

**Ubiquilin3 Antibody (N-term) - Product Information**

Application	WB, IHC-P,E
Primary Accession	<a href="#">Q9H347</a>
Reactivity	Human
Host	Rabbit
Clonality	Polyclonal
Isotype	Rabbit IgG
Calculated MW	70841
Antigen Region	1-30

**Ubiquilin3 Antibody (N-term) - Additional Information****Gene ID** 50613**Other Names**

Ubiquilin-3, UBQLN3

**Target/Specificity**

This Ubiquilin3 antibody is generated from rabbits immunized with a KLH conjugated synthetic peptide between 1-30 amino acids from the N-terminal region of human Ubiquilin3.

**Dilution**

WB~~1:1000

IHC-P~~1:50~100

E~~Use at an assay dependent concentration.

**Format**

Purified polyclonal antibody supplied in PBS with 0.09% (W/V) sodium azide. This antibody is prepared by Saturated Ammonium Sulfate (SAS) precipitation followed by dialysis against PBS.

**Storage**

Maintain refrigerated at 2-8°C for up to 2 weeks. For long term storage store at -20°C in small aliquots to prevent freeze-thaw cycles.

**Precautions**

Ubiquilin3 Antibody (N-term) is for research use only and not for use in diagnostic or therapeutic procedures.

**Ubiquilin3 Antibody (N-term) - Protein Information****Name** UBQLN3**Tissue Location**

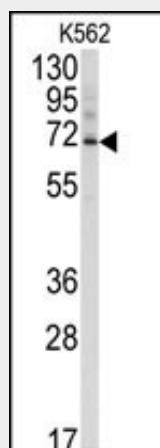
Testis specific..

### Ubiquilin3 Antibody (N-term) - Protocols

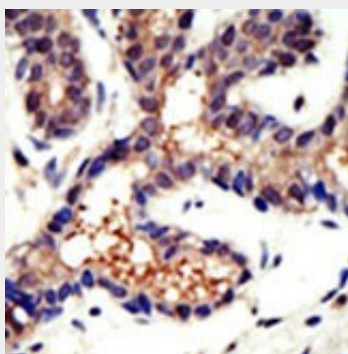
Provided below are standard protocols that you may find useful for product applications.

- [Western Blot](#)
- [Blocking Peptides](#)
- [Dot Blot](#)
- [Immunohistochemistry](#)
- [Immunofluorescence](#)
- [Immunoprecipitation](#)
- [Flow Cytometry](#)
- [Cell Culture](#)

### Ubiquilin3 Antibody (N-term) - Images



Western blot analysis of anti-Ubiquilin3 Antibody (N-term) (Cat.#AP2177a) in K562 cell line lysates (35ug/lane). Ubiquilin3 (arrow) was detected using the purified Pab.



Formalin-fixed and paraffin-embedded human cancer tissue reacted with the primary antibody, which was peroxidase-conjugated to the secondary antibody, followed by DAB staining. This data demonstrates the use of this antibody for immunohistochemistry; clinical relevance has not been evaluated. BC = breast carcinoma; HC = hepatocarcinoma.

### Ubiquilin3 Antibody (N-term) - Background

Ubiquilin 3 shares high degree of similarity with related products in yeast, rat and frog. Ubiquilins contain a N-terminal ubiquitin-like domain and a C-terminal ubiquitin-associated domain. They

physically associate with both proteasomes and ubiquitin ligases, and are thus thought to functionally link the ubiquitination machinery to the proteasome to affect in vivo protein degradation. The gene is specifically expressed in the testis, and proposed to regulate cell-cycle progression during spermatogenesis.

#### **Ubiquilin3 Antibody (N-term) - References**

Conklin, D., et al., Gene 249 (1-2), 91-98 (2000).